



BOOKMARK FACT SHEET

Z-Cataloguing

October 2019

Z-cataloguing provides an easy way to download cataloguing data records from the Internet.

Records are directly downloaded from an online source "on the fly" rather than by ordering.

In some cases, Z-cataloguing can be faster than the normal importing of MARC records from a file.

Z-cataloguing uses the "z39.50 protocol" to search for and download records.

(<https://en.wikipedia.org/wiki/Z39.50>)

* Note: The SCIS API is an alternate method that provides similar functionality but without using z39.50. SCIS API may be used in situations in which z39.50 is unavailable. See the SCIS API Fact Sheet for more information.

Z39.50 can be blocked

On some systems, access to Z39.50 can be blocked by network policies. This can be either at the school-level or on the state-wide network or both. See the *Technical Notes* section at the end for more information.

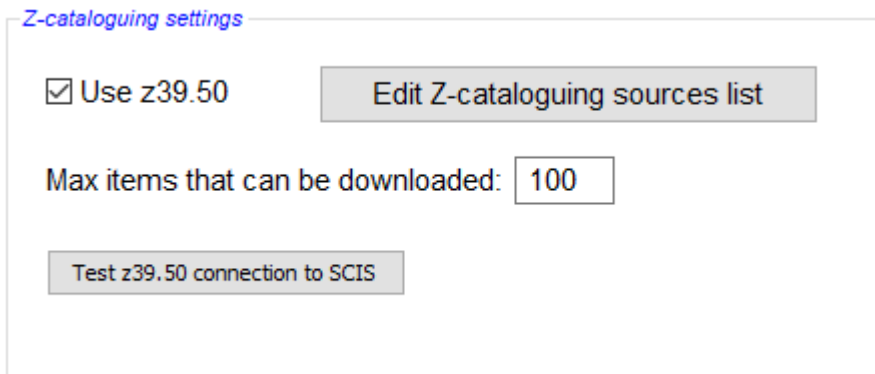
Z39.50 Data Sources

Z-cataloguing retrieves MARC catalogue records from z39.50 servers or "data sources" on the Internet. Many libraries around the world have these servers. Most require login credentials – a username and password – but some do not. All data source Sites need to be registered in Bookmark before they can be used.

Configuring

To be used, Z-cataloguing must be activated then tested.

Go to Controls then click on General Controls. Click on the Cataloguing tab. Locate the Z-cataloguing frame on the right side.

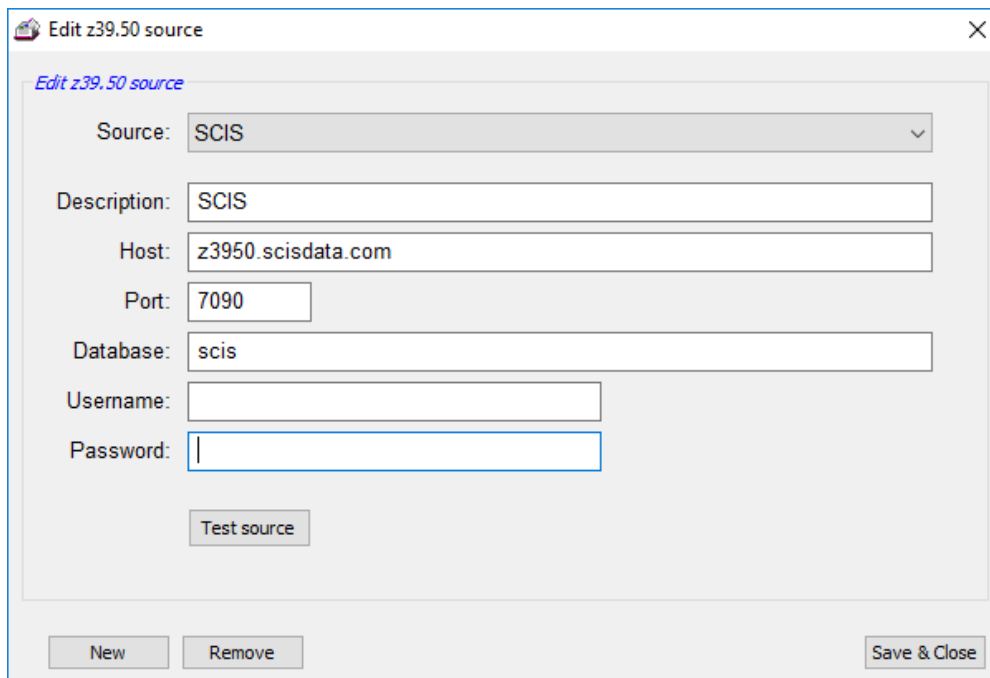


The screenshot shows a panel titled "Z-cataloguing settings". It contains a checked checkbox labeled "Use z39.50" next to a button "Edit Z-cataloguing sources list". Below this is a label "Max items that can be downloaded:" followed by a text input field containing the number "100". At the bottom of the panel is a button labeled "Test z39.50 connection to SCIS".

The "Use z39.50" checkbox must be ticked. This activates the function. It can be ticked whether z39.50 is available or blocked.

Edit Z-cataloguing sources list

This popup dialog is used to configure the Z-cataloguing data sources. It can also be used to add other sources to the list.



The screenshot shows a dialog box titled "Edit z39.50 source". It has a close button (X) in the top right corner. The dialog contains the following fields: a dropdown menu for "Source" with "SCIS" selected; a text input for "Description" with "SCIS"; a text input for "Host" with "z3950.scisdata.com"; a text input for "Port" with "7090"; a text input for "Database" with "scis"; an empty text input for "Username"; and an empty password input field for "Password". Below these fields is a "Test source" button. At the bottom of the dialog are three buttons: "New", "Remove", and "Save & Close".

Use the dropdown list at the top to edit a currently registered source. SCIS is the default but the most recently used source is always displayed first.

Three default data sources are provided:

- Schools Cataloguing Information Service
- National Library of Australia (NLA)
- U.S. Library of Congress (LOC)

Closing the window auto-saves any changes. Re-open to work on another source.

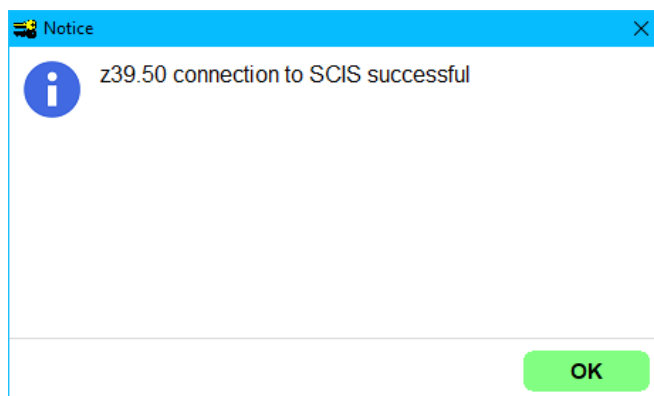
NLA and LOC do not require a username and password but to access the SCIS z39.50 source, a username and password are required. See below.

Other z39.50 sites can be found via an Internet search. Something like "z39.50 servers" will produce lists or sites with lists. Many libraries in Australia provide a z39.50 service. They may require usernames and passwords and membership.

To add another site to the list, click on the New button.

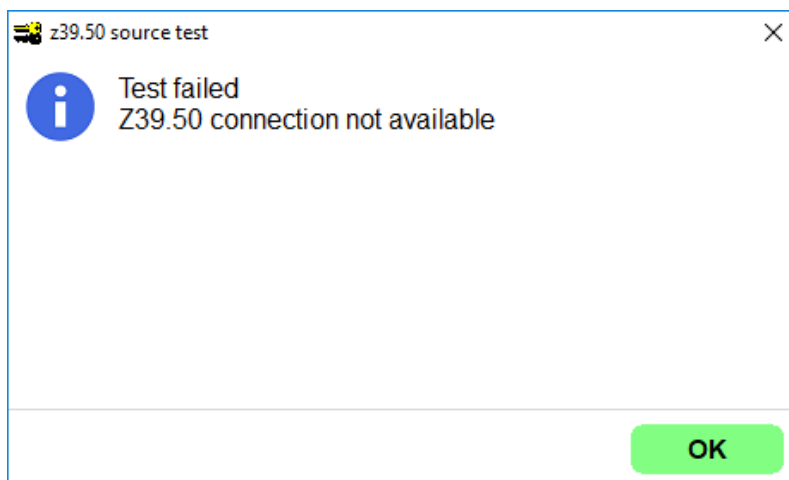
Test SCIS Connection

Use the "Test z39.50 connection to SCIS" button to see if a connection is possible or blocked. A username and password are not required for the simple test so it can also check to see if z39.50 is available.

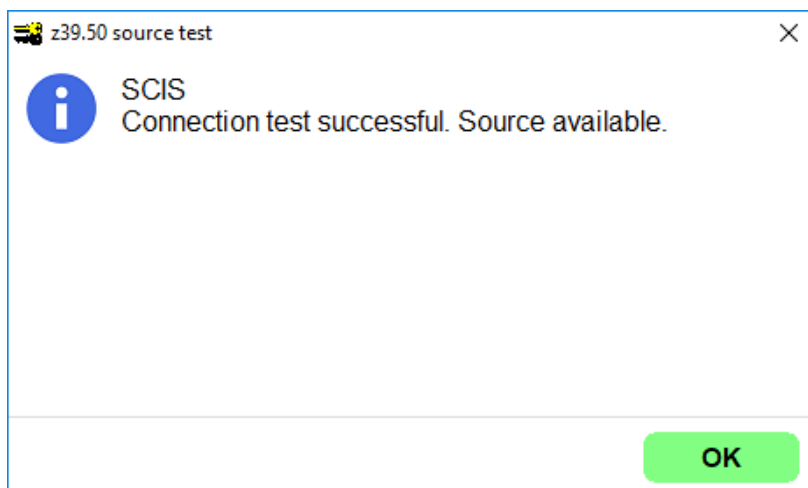


Test Source

Use the Test source button to see if the z39.50 source is available and configured correctly. If the source is unavailable or details are incorrect, then a test failed notice appears.



If the test is successful ...



Tests for NLA and LOC do not require a username and password. However, access to those sites may be blocked but SCIS may be available.

Special Instructions for SCIS users – z39.50 access to SCIS

The SCIS cataloguing service provides a z39.50 option. This is the default Z-cataloguing source in Bookmark. To use this option, a SCIS subscription is required, the necessary port unblocked on the network and the URL whitelisted. (See Technical Notes.)

The SCIS z39.50 login details need to be checked and possibly adjusted as *the password can be different to the regular SCIS credentials*. For information on how to check the SCIS z39.50 access, see the SCIS Help article at <https://help.scisdata.com/hc/en-us/articles/115011883728-How-do-I-set-up-z39.50> .

In Bookmark, click on the "Edit Z-cataloguing sources list" button to pop up a window. In the drop-down Source list at the top, select the SCIS option. Add your username and password for z39.50 access.

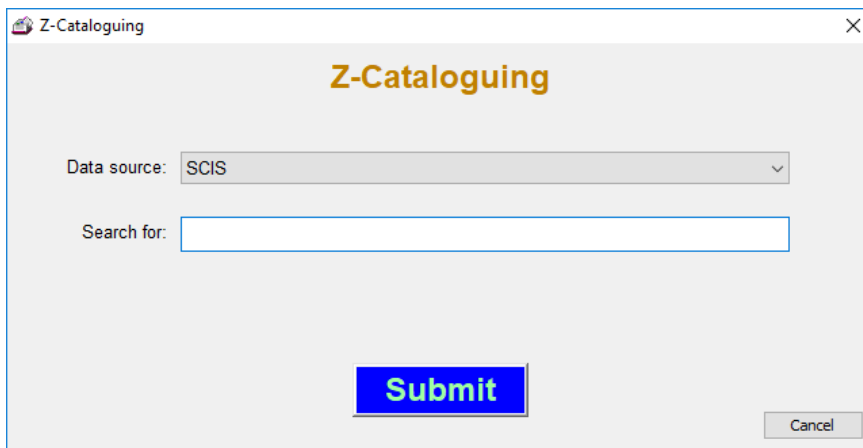
Click on *Test Source* to make sure access is available. This test must be successful for Z-cataloguing with SCIS to work.

Closing saves.

Using Z-Cataloguing

Z-cataloguing can make cataloguing items quicker and easier.

In AddEdit Items, enter a new item number or barcode just as you would to manually catalogue a new record. Click on the Z-Cataloguing button at the top. Select the source then enter a query.



Z-Cataloguing

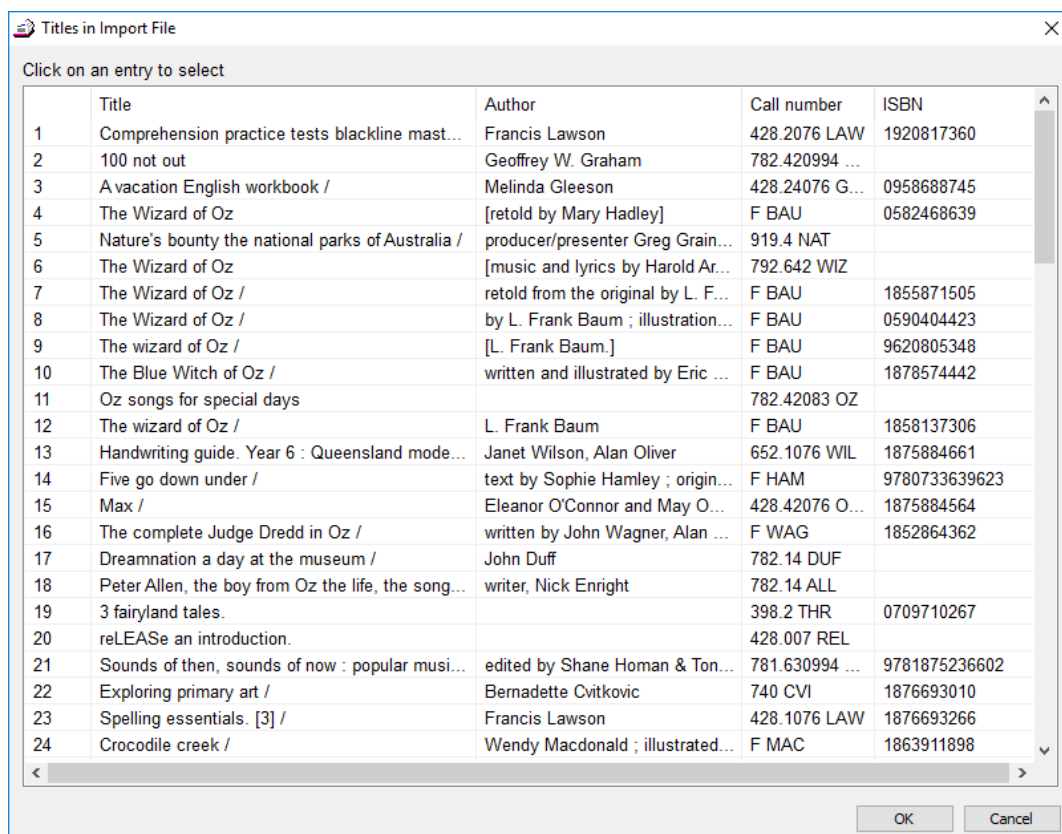
Data source: SCIS

Search for:

Submit

The query can be an ISBN or words from a title. Results are listed. Select the desired item then finish cataloguing as normal.

Note: if using the SCIS API only and Z-cataloguing is not active, then a SCIS API button will appear instead of Z-Cataloguing. If both are active, only the Z-Cataloguing button appears.



Click on an entry to select

	Title	Author	Call number	ISBN
1	Comprehension practice tests blackline mast...	Francis Lawson	428.2076 LAW	1920817360
2	100 not out	Geoffrey W. Graham	782.420994 ...	
3	A vacation English workbook /	Melinda Gleeson	428.24076 G...	0958688745
4	The Wizard of Oz	[retold by Mary Hadley]	F BAU	0582468639
5	Nature's bounty the national parks of Australia /	producer/presenter Greg Grain...	919.4 NAT	
6	The Wizard of Oz	[music and lyrics by Harold Ar...	792.642 WIZ	
7	The Wizard of Oz /	retold from the original by L. F...	F BAU	1855871505
8	The Wizard of Oz /	by L. Frank Baum ; illustration...	F BAU	0590404423
9	The wizard of Oz /	[L. Frank Baum.]	F BAU	9620805348
10	The Blue Witch of Oz /	written and illustrated by Eric ...	F BAU	1878574442
11	Oz songs for special days		782.42083 OZ	
12	The wizard of Oz /	L. Frank Baum	F BAU	1858137306
13	Handwriting guide. Year 6 : Queensland mode...	Janet Wilson, Alan Oliver	652.1076 WIL	1875884661
14	Five go down under /	text by Sophie Hamley ; origin...	F HAM	9780733639623
15	Max /	Eleanor O'Connor and May O...	428.42076 O...	1875884564
16	The complete Judge Dredd in Oz /	written by John Wagner, Alan ...	F WAG	1852864362
17	Dreamnation a day at the museum /	John Duff	782.14 DUF	
18	Peter Allen, the boy from Oz the life, the song...	writer, Nick Enright	782.14 ALL	
19	3 fairyland tales.		398.2 THR	0709710267
20	reLEASE an introduction.		428.007 REL	
21	Sounds of then, sounds of now : popular musi...	edited by Shane Homan & Ton...	781.630994 ...	9781875236602
22	Exploring primary art /	Bernadette Cvitkovic	740 CVI	1876693010
23	Spelling essentials. [3] /	Francis Lawson	428.1076 LAW	1876693266
24	Crocodile creek /	Wendy Macdonald ; illustrated...	F MAC	1863911898

Select an entry by clicking to highlight then click OK. Double-clicking will also select.

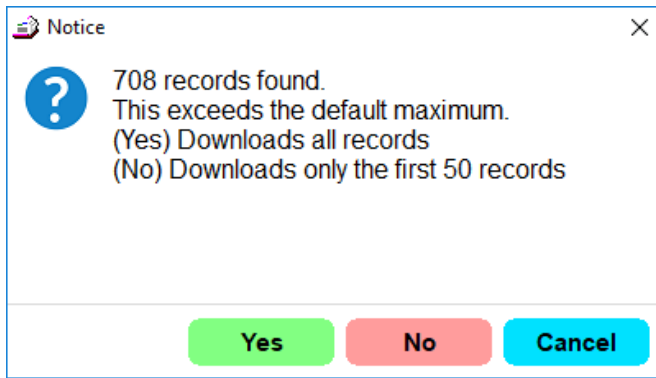
A MARC record is downloaded and displayed.

Note: Z-cataloguing cannot be used to "order" multiple records. This can only be done via the normal SCIS ordering webpage and Import Items in Bookmark.

If the number of records found exceeds the maximum set in Controls, a message is shown.

email
education.bookmark@sa.gov.au

website
<http://bookmark.central.sa.edu.au/>



After clicking on Yes or No, the records are downloaded into the computer's memory. *A file is not saved.*

Note: downloading a large number of records can take some time.

List Titles

When using Z-cataloguing, a "List Titles" button appears at the top of the window. Clicking on this brings up the list of titles found by the search.

New Items and Updating Existing Items

Z-cataloguing can be used when entering new items or to update an existing item's catalogue data.

If a new item, enter the item number or barcode first then click on the Z-cataloguing button.

To update, bring the item up in AddEdit as normal then click on the Z-cataloguing button. Holdings info on the right is not affected, but all catalogue fields are replaced.

Bulk Ordering

Z-cataloguing is primarily intended for "on the fly" cataloguing. However, it is possible to place an order for up to 30 ISBNs. In Bookmark, go to Cataloguing then Import Items. Click on the Z-Cataloguing button.



Scan in a list of ISBNs and click on Submit.

Titles downloaded are saved into a MARC file. After saving, go to Import MARC Records to open the file and process the records.

Technical Note – Windows users

Z39.50 in Bookmark uses Index Data's YAZ software. It should work in all Windows 10 systems but will fail in Windows XP and may not work in some Windows 7 systems. The 2015 version of the "Microsoft Windows C++ Redistributable" software library must have been installed. It usually is normally provided with Windows 10, but may need to be installed on Windows 7 systems.

Special Technical Note - Ports

Z39.50 uses ports 7090 or 210 depending on the source. *Many networks automatically block access to these ports.* The port can be blocked at both the school-level and the state-network level. If blocked, Z-cataloguing will not work. Only Victoria and South Australia currently allow public schools unblocked access to Z-cataloguing. South Australia only allows access to the SCIS source

email

education.bookmark@sa.gov.au

website

<http://bookmark.central.sa.edu.au/>

but not others. Private schools, however, may be unblocked.. A simple test can be made to determine if z39.50 or "Z-cataloguing" can be used. See below.