



BOOKMARK FACT SHEET

Webopac webserver setup guide

May 2017

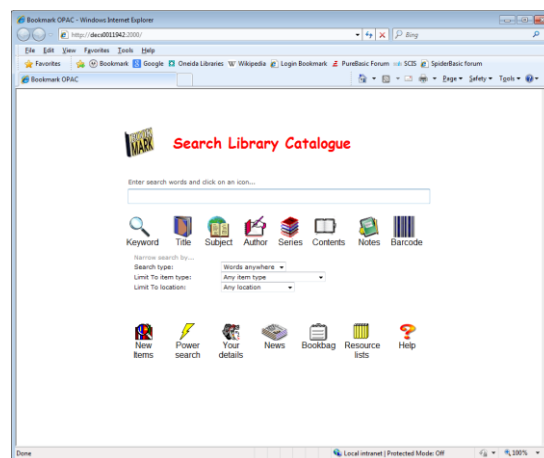
Webopac is a *browser-based* search component for Bookmark. It is launched by a URL from an Internet browser such as Internet Explorer, Firefox, Chrome or Safari.

The search computer can use any operating system as long as it can access the network hosting Webopac. Tablets with a browser, including iPads and Android, can use Webopac.

The standard Search program in Bookmark is Windows-based and requires a desktop icon to open. It can be launched from a Windows-based system such as a desktop computer or Windows tablet. Webopac offers similar functionality but through a browser and therefore is less dependent on the operating system.

School network firewalls usually prevent access outside the network, only within.

OPAC = On-line Public Access Catalogue



After installation, library staff can select the presentation and set other details.

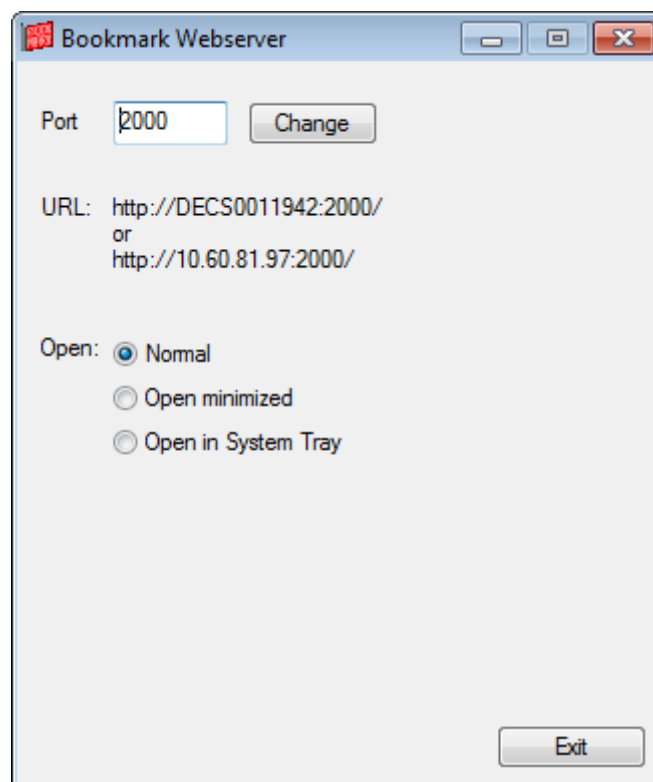
Webopac Installation and Setup

Webopac uses its own webserver. It does not require IIS, Apache or any other web-serving system. It can co-exist on the same computer as another webserver.

The Webopac software comes with Bookmark and is put in place when Bookmark is installed or updated. (Version 10.2 onwards is required.)

To use Webopac, the webserver program must be open and running on the Bookmark host computer. This is the computer on which Bookmark itself is physically installed.

- Method 1. Open Windows Explorer. Locate Bookmark and open its folder. In the list of files, locate Bmwebsvr.exe. Right-click on it and then on "Send to" and then "Desktop". After the red icon appears, rename it to Bookmark Webserver.
- Method 2. Right-click on the desktop. Left click on "New" then on "Shortcut". On the Create Shortcut Wizard, enter the path to the webserver which is a file called Bmwebsvr.exe – e.g. L:\Bmwebsvr.exe. This path can vary depending on your computer. The Browse button can be used. Click on Next. On the next panel, delete the icon name and replace it with Bookmark Webserver. Click Finish.
- Do not use Windows Explorer to find the file and drag it to the desktop. This method may not correctly create the icon's properties.
- It is very useful to place the webserver icon in the Windows Startup folder. When the host computer boots up, the webserver will then automatically be launched.



Once launched, leave it open.

URL and Ports (technical)

The URL is the name of the host computer – e.g. <http://HostComputerName> - or its IP address.

By default, the webserver attempts to use the default port 80. If this is in use (by another webserver such as IIS), Bookmark's webserver then switches to port 2000 and begins checking upwards until it finds a free port. You can manually assign the port via the Webserver window.

If port 80 is used, the URL is simply the name of the computer. If another port is needed, a colon followed by the port number must appear after the name – e.g. <http://HostComputerName:2000>

The webserver can be set to open normally or minimized or in the computer's system tray.

Webserver Controls is found in the Bookmark main program: Controls / Webopac Controls / Webserver Controls.

On some systems, (possibly Windows XP), if set to the system tray, the webserver icon may not appear there. In this case, the only way the webserver can be closed is to open the Task Manager and kill the process. In testing on Windows 7 systems, it always appeared in the tray.

By default, the window opens normally.

User Icons

A user icon to launch Webopac is optional as it can be included in a browser's favourites or bookmarks list. A hyperlink to the page can also be placed on other webpages – e.g. master library page.

An optional desktop shortcut icon can be made and only requires the URL as the target – e.g. <http://decs0011942:2000/>.

Several 32x32 pixel Bookmark icons are available at Bookmark's location.

