

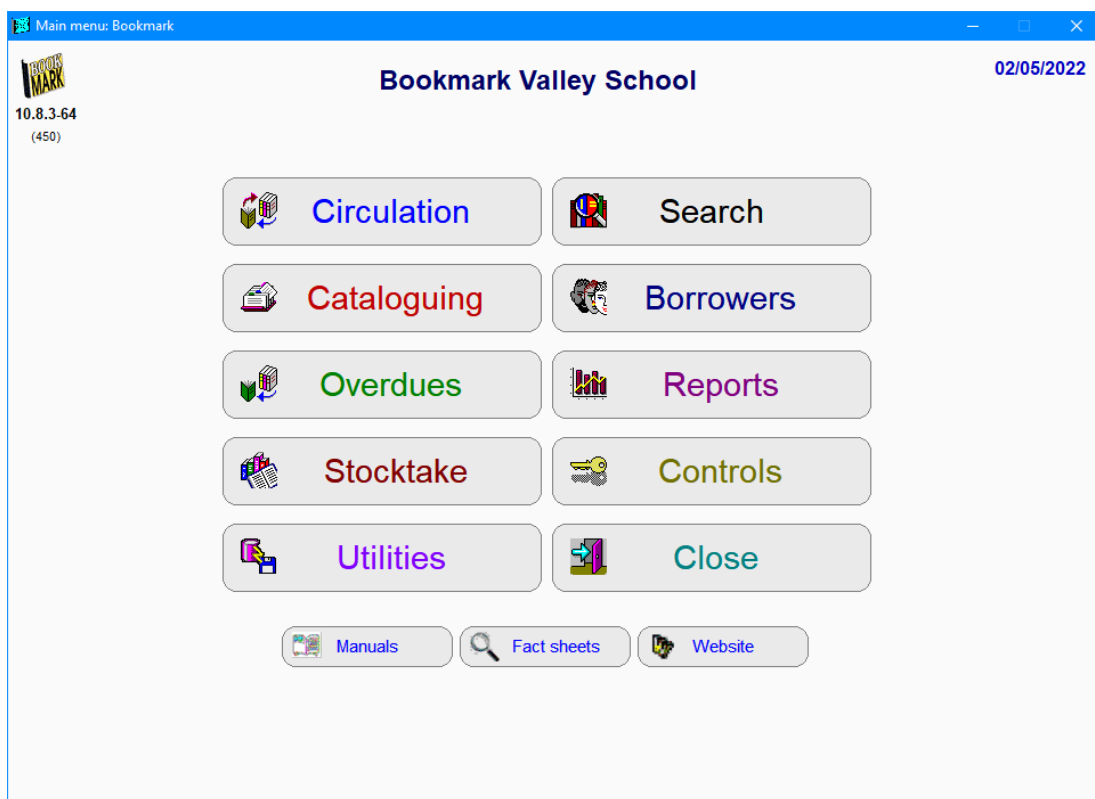
BOOKMARK FACT SHEET

Customizing the Main Menus

May 2022

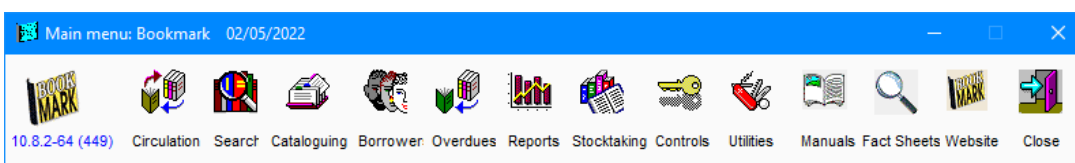
Bookmark allows four different styles of the Main Menu.

The default style is a normal size Bookmark window (990 x 660 pixels) with large multi-coloured buttons.



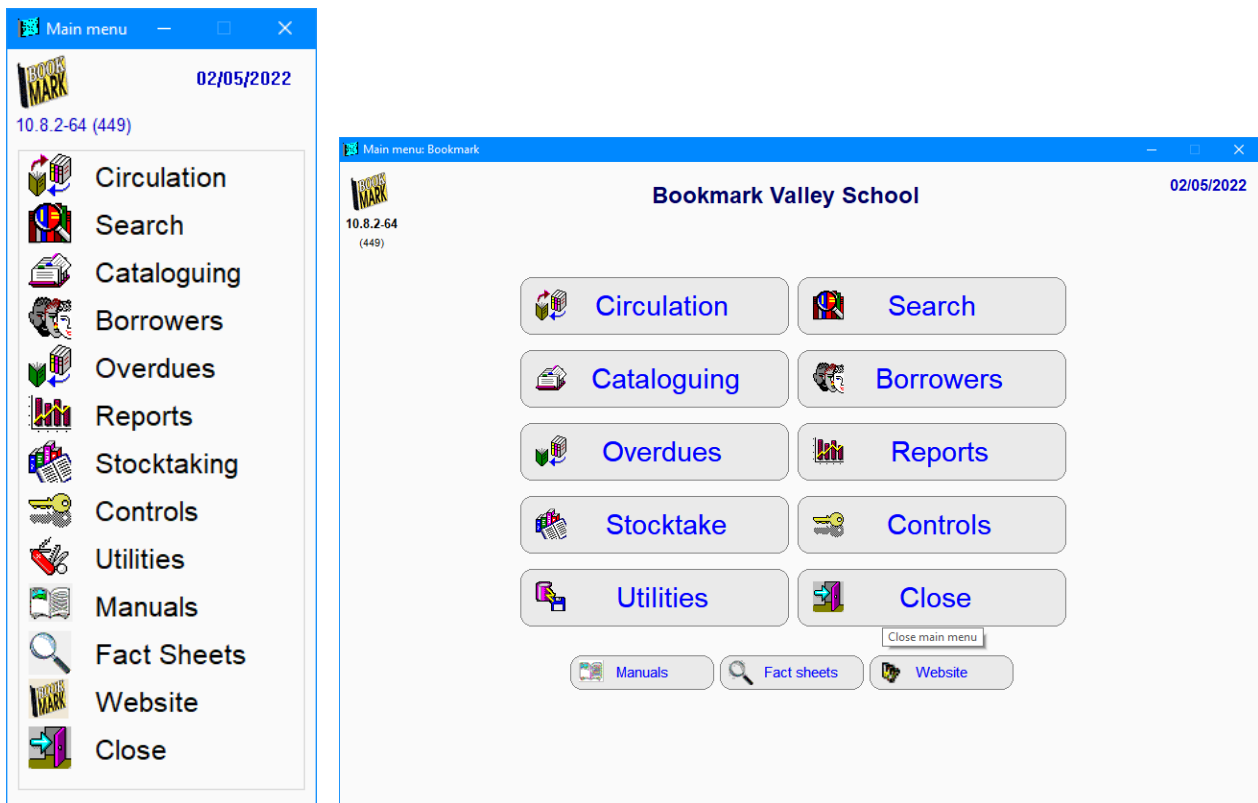
The round-corner buttons were introduced with version 10.8.3. Prior versions had square-corner buttons. It is possible to change the "roundness" of the corners and the colours. See the Fact Sheet *Customizing Button Appearance*.

Bookmark provides three other main menu styles.



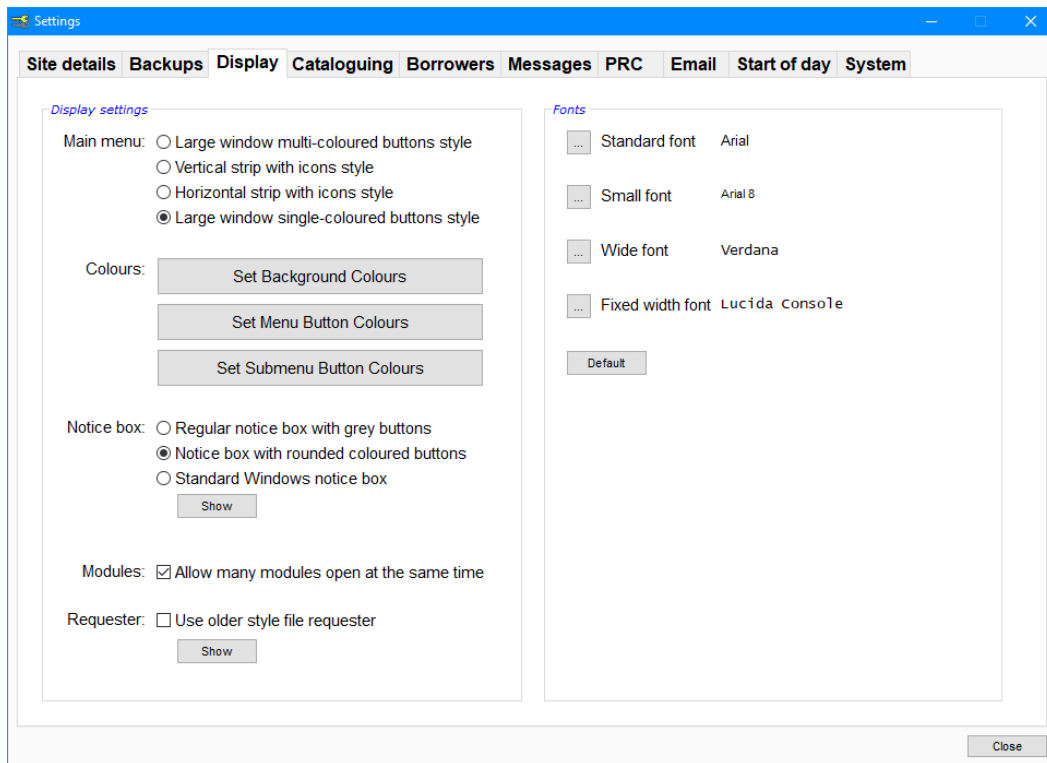
email
education.bookmark@sa.gov.au

website
<http://bookmark.central.sa.edu.au/>



The fourth style is the same as the first but the text is all one colour.

To choose a Main Menu style, click on Controls. Enter password if requested. Click on Settings then on the Display tab.



- Main menu:
- Large window multi-coloured buttons style
 - Vertical strip with icons style
 - Horizontal strip with icons style
 - Large window single-coloured buttons style

Click on the main menu style you wish to use by placing the radiobutton dot.

Then close Settings. Close Controls. Close Bookmark completely.

When Bookmark is restarted, the selected main menu style appears. It will only appear after restarting.

Style 1 – the text colours are preset and cannot be changed. However, the background button colour and the degree of rounding can be altered by using the Set Menu Button Colours option on the Display tab.

Style 4 – the text colour and button background colour and corner rounding can be altered using the Set Menu Button Colours option on the Display tab.

Both these styles use Arial 22pt font. This is fixed and cannot be changed.